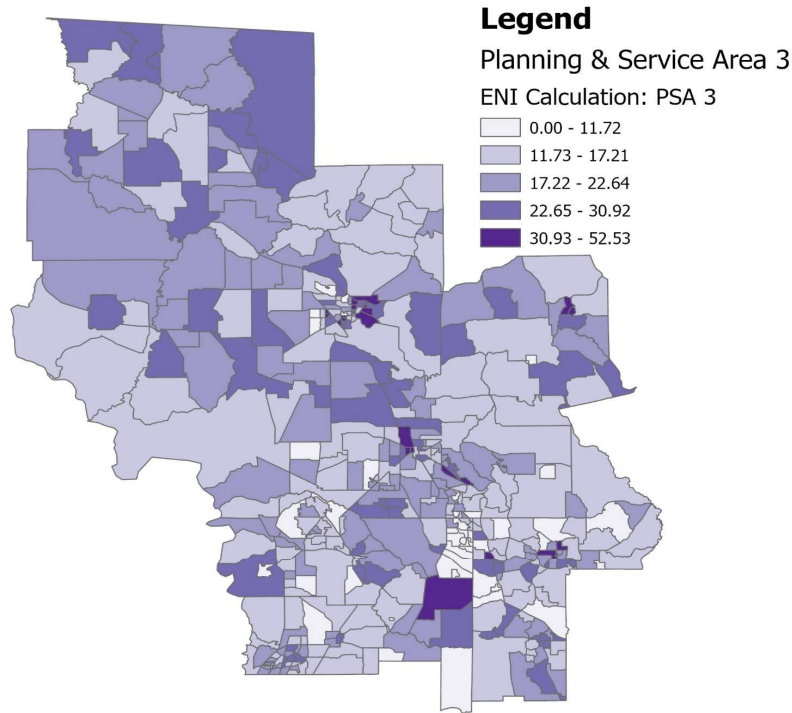


2025 Profile of Older Floridians

Planning and Service Area (PSA) 3

This profile of older Floridians is a source of current information related to older adults in the Planning and Service Area. Topics include the current and future population of older adults, the prevalence of older adults who experience financial and housing issues, the array of health and medical resources, and information related to disasters. As Florida's older adult population grows, awareness of these issues is needed to ensure that older people continue to be vital participants in their communities.

Elder Needs Index



The Elder Needs Index (ENI) is a measure that includes: (1) the percentage of the 60 and older population that is age 85 and older; (2) the percentage of the 55 and older population that are members of racial or ethnic minority groups; (3) the percentage of the 65 and older population with one or more disability; and (4) the percentage of the 55 and older population living below 125 percent of the Federal Poverty Level. ENI is an averaged score indicating older adults who may need social services within a geographic area. **It is not a percentage of the area's population.** The green areas of the map represent bodies of land such as national parks, state forests, wildlife management areas, and local and private preserves. The blue areas of the map represent bodies of water such as lakes, streams, rivers, and coastlines. Interactive maps, viewing software, and a detailed user's guide are available at http://elderaffairs.state.fl.us/doea/eni_home.php

Source: Florida Department of Elder Affairs using U.S. Census Bureau, 2018-2022 American Community Survey 5-Year Estimates

Useful Websites

Bureau of Economic and Business Research (BEBR)
U.S. Census Bureau, American Community Survey (ACS)
U.S. Census Bureau, Quick Facts
Florida Agency for Health Care Administration (AHCA)
Florida Department of Elder Affairs (DOEA)
How to Become an Age Friendly Community

Florida Division of Emergency Management (Shelters)
Florida Housing Data Clearinghouse
County Chronic Disease Profile
Aging Integrated Database (AGID)
Florida DOEA ENI Maps

2025 Profile of Older Floridians

Planning and Service Area (PSA) 3 Demographic Profile

The demographics section presents the population characteristics of those age 60 and older and examines traits about older Floridians, such as the number of veterans, voters, and drivers.

Age Category	Value	Percent
All Ages	1,974,071	100%
Under 18	344,036	17%
Under 60	1,259,614	64%
18-59	915,578	46%
60+	714,457	36%
65+	562,493	28%
70+	408,026	21%
75+	269,221	14%
80+	150,770	8%
85+	70,761	4%

Source: BEBR, 2024

Gender	Value	Percent
Male	327,037	46%
Female	387,420	54%

Source: BEBR, 2024

Living Alone (65+)	Value	Percent
Male Living Alone	43,219	35%
Female Living Alone	79,095	65%

Source: U.S. Census Bureau, 2019-2023 ACS

Educational Attainment (65+)	Value	Percent
Less than High School	50,173	9%
High School Diploma	164,525	29%
Some College, No Degree	106,405	19%
Associates Degree or Higher	169,965	30%

Source: U.S. Census Bureau, 2019-2023 ACS

Marital Status	Male	Female
Never Married	14,220	13,184
Percentage Never Married	5%	4%
Married	210,195	183,815
Percentage Married	72%	56%
Widowed	26,530	82,605
Percentage Widowed	9%	25%
Divorced	40,435	49,535
Percentage Divorced	14%	15%

Source: AGID 2017-21 ACS

Race and Ethnicity	Value	Percent
White	648,194	91%
Black	53,856	8%
Other Race	12,407	2%
Total Hispanic	44,686	6%
White Hispanic	40,614	6%
Non-White Hispanic	4,072	1%
Total Non-Hispanic	669,771	94%
Total Minority	106,877	15%

The minority population includes black, other, and Hispanic.

Source: BEBR, 2024

Driver License Holders	Value	Percent
Drivers	677,728	42%

Source: Florida Department of Highway Safety and Motor Vehicles, 2024

Registered Voters	Value	Percent
Registered Voters	685,795	46%

Source: Florida Department of State, 2024

Percentage calculation is based on total registered voters.

Veterans	Value	Percent
Age 45-64	42,997	31%
Age 65-84	77,297	57%
Age 85+	16,497	12%

Source: U.S. Department of Veterans Affairs, 2023

Grandparents	Value	Percent
Living With Grandchildren	22,415	3%
Grandparent Responsible for Grandchildren	8,575	1%
Grandparent Not Responsible for Grandchildren	13,844	2%
Not Living With Grandchildren	586,885	82%

Grandchildren are defined as being under the age of 18.

Source: AGID 2017-21 ACS

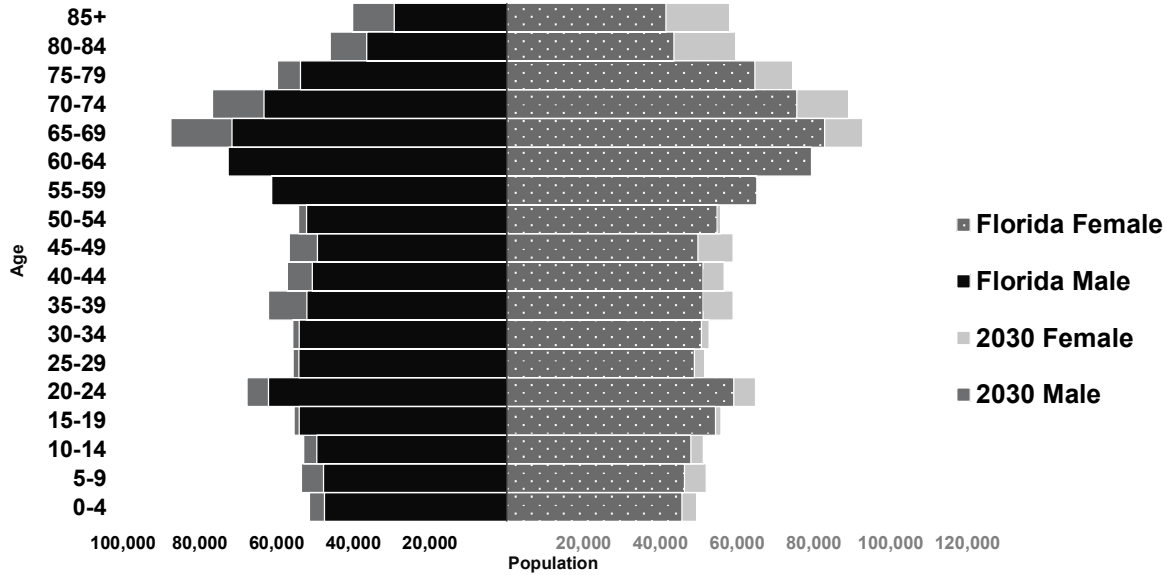
English Proficiency	Value	Percent
With Limited English Proficiency (65+)	7,937	1%

Source: U.S. Census Bureau, 2019-2023 ACS

2025 Profile of Older Floridians

Planning and Service Area (PSA) 3 Demographic Profile

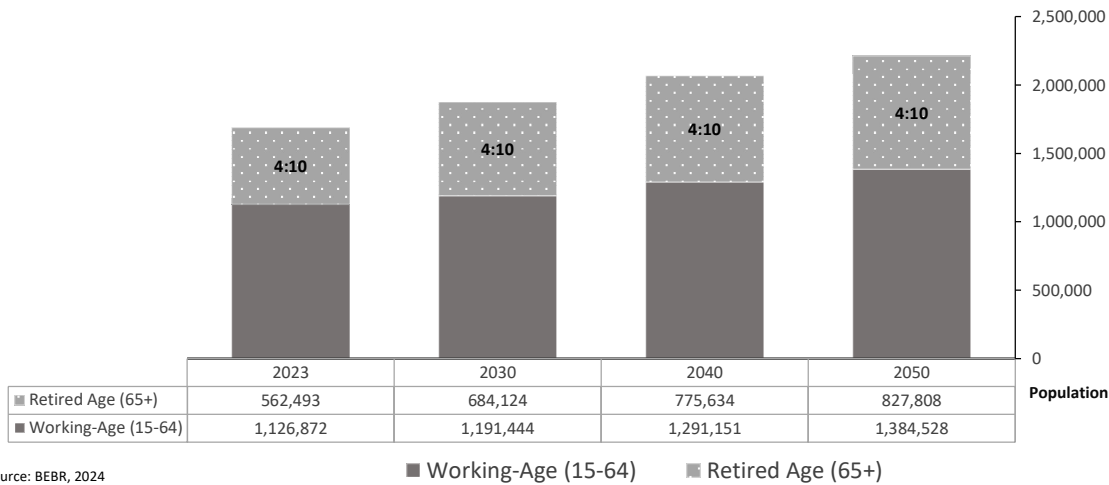
The population pyramid below compares the projected older adult population by gender between 2023 and 2030, demonstrating the changes expected in the next decade. As a whole, Florida is expected to experience population growth, with some areas expecting notable growth in the proportion of those age 65 and older.



Source: BEBR, 2024

Older Adult Dependency Ratio

The dependency ratio contrasts the number of working-age (15-64) individuals compared to the number of individuals age 65 and older who are likely retired from the workforce. This ratio reflects the ongoing contributions of taxes and wages to support the health care and retirement systems used by retirees, as well as the availability of younger individuals to serve as caregivers to older loved ones.



Source: BEBR, 2024

2025 Profile of Older Floridians

Planning and Service Area (PSA) 3 Financial Profile

This section examines financial conditions, poverty rates, and the cost of living for older Floridians. The ratio of income to poverty level graphic below shows the distribution of older adults relative to the poverty level to show the proportion of the senior population who fall below the Federal Poverty Level (FPL). The portrayal of the financial conditions of older adults is detailed in the final graphic, which includes information about income relative to rates of homeownership and partnership status in the consideration of cost of living.

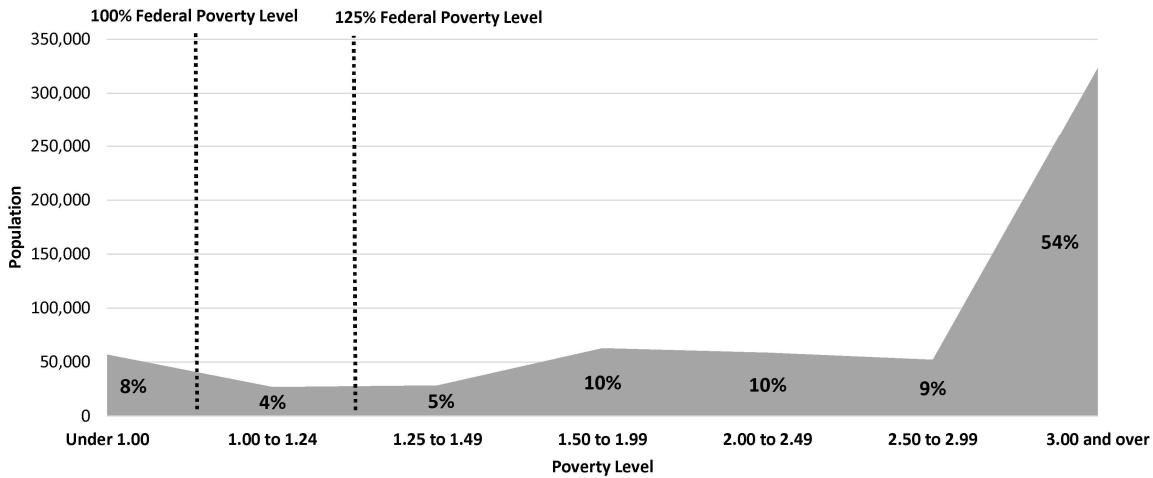
Federal Poverty Level	Value
Single-Person Household	\$15,650
Two-Person Household	\$21,150
125% Single-Person Household	\$19,563
125% Two-Person Household	\$26,438

Source: U.S. Department of Health & Human Services, 2025

Poverty (65+)	Value	Percent
At Poverty Level	46,656	8%
Below 125% of Poverty Level	68,133	12%
Minority At Poverty Level	6,118	1%
Minority Below 125% of Poverty Level	8,881	2%

Source: U.S. Census Bureau, 2019-2023 ACS

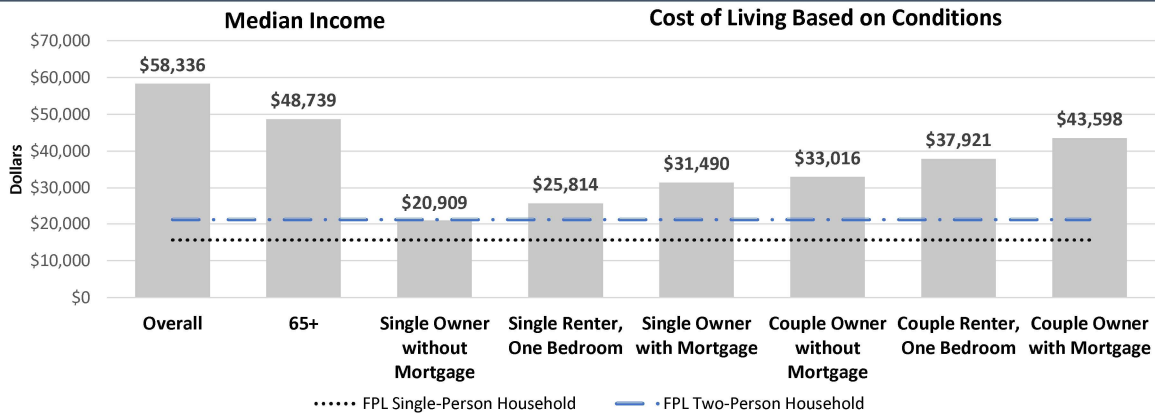
Ratio of Income to Poverty Level



Value is expressed as the percentage of the 60+ population, with the dotted lines representing the Federal Poverty Level.

Source: AGID 2017-21 ACS

Financial Conditions



Cost of living is an index of how much income retired older adults require to meet their basic needs to live in their community without assistance.

Source: U.S. Census Bureau, 2019-2023 ACS and Elder Index, (2024). The Elder Index™ [Public Dataset]. Boston, MA: Gerontology Institute, University of Massachusetts Boston. Retrieved from E

2025 Profile of Older Floridians

Planning and Service Area (PSA) 3 Livability Profile

The livability section presents new elements, such as available affordable housing for older adults. Many essential community elements are also included below, such as sidewalk safety, the safety of roadways, and availability of green spaces. The rates of older Floridians who have access to a vehicle or public transportation, as well as the availability of internet access and various food resources, are also provided. These provide estimates of older adults' ability to access community resources.

Pedestrian Safety Percent

Sidewalks with Barriers 30%

Physical barriers are those that separate motorized vehicle lanes from sidewalks or shared path (e.g. areas for parking lots, guardrail, trees, etc.).

Source: Florida Department of Transportation, 2025

Road Incidents Value

Total Involved in Fatal Car Crashes per 100,000 22

This figure includes occupants and non-occupants involved in a crash.

Source: Florida Department of Highway Safety and Motor Vehicles, 2024

Age Friendly Designation Value

Age Friendly 3

Number of Counties 16

The following counties have received the designation: Alachua, Citrus, Marion

Source: Florida DOEA Livable Communities, 2021

Food Resource Centers Value

SNAP Access Sites 7

Fresh Access Bucks Outlet 16

Farmer's Market 19

Food Distribution (No Cost) 48

SNAP Retailers 1,590

Congregate Meal Sites 34

Food Distribution (No Cost) is the number of food pantries, soup kitchens, and food banks in the area.

Source: Feeding Florida, USDA, Food-Banks, DCF, FDACS, 2025;

Public Transportation Options Value

Bus Operations at least at the County 3

Rail Operations at least at the County 0

Public Transit Service Area (sq. mi.) 468

Public Transit Service Area Population 710,087

Annual Unlinked Trips 5,734,083

Vehicles Operated in Maximum Service (VOMS) 443

Total Miles of Bike Lanes 1,087

Information on service area is not reported by rural and intercity public transit.

VOMS are the number of vehicles operated to meet the annual max service, and unlinked trips are the number of passengers boarding public transit.

Source: Federal Transit Administration, 2023, and FDOT, 2023-2024

Green Space Value

Number of Nearby State Parks 66

Nearby refers to the park that has the shortest distance from the center of the county.

Source: Florida Department of Environmental Protection, 2025

Rural-Urban Designation Value

Census Tracts Rural 36%

Census Tracts Urban 64%

Number of Census Tracts 331

Source: U.S. Department of Agriculture, 2019

Households With High Cost Burden (65+) Value

Owner-Occupied Households 63,060

Percent of Owners with High Cost Burden 21%

Renter-Occupied Households 50,647

Percent of Renters with High Cost Burden 28%

Households with a high cost burden have occupants age 65+ paying more than 30% of income for housing costs and having an income below 50% of the area median income.

Source: The Shimberg Center for Housing Studies, 2023, U.S. Census Bureau, 2019-2023 ACS

Affordable Housing Inventory Value

Properties 97

Properties Ready for Occupancy 97

Total Units 6,979

Units with Rent and/or Income Restrictions 6,726

Units Receiving Monthly Rental Assistance 2,381

Affordable housing inventory receives funding from HUD, Florida Housing Financing Corp., and the USDA. The inventory above includes older adults as its target population.

Source: The Shimberg Center for Housing Studies, 2022-2023

Housing Units by Occupancy (65+) Percent

Owner-Occupied Housing Units 59%

Renter-Occupied Housing Units 26%

Source: U.S. Census Bureau, 2019-2023 ACS

Vehicle Access (65+) Percent

Owner-Occupied Households with Access to Vehicle(s) 97%

Renter-Occupied Households with Access to Vehicle(s) 76%

Source: U.S. Census Bureau, 2019-2023 ACS

Employment Status (65+) Value Percent

Number of Seniors Employed 195,526 35%

Number of Seniors Unemployed 6,680 1%

Source: U.S. Census Bureau, 2019-2023 ACS

Retirement (65+) Value Percent

Social Security Beneficiaries 505,290 82%

SSI Recipients 10,577 24%

SSI stands for Supplemental Security Income. To qualify, a person must be at least age 65

OR be blind or disabled. Also, the person must have limited income and resources.

Source: U.S. Social Security Administration, 2023

SNAP or Food Stamps Value

Potentially Eligible 68,133

Annual Participants 67,441

Current Beneficiaries as of Dec-24 51,393

Percent of Total Population Receiving Benefits 6%

Potentially Eligible are individuals below 125% of the Federal Poverty Level

Source: Florida Department of Children and Families, 2024

Internet Access (65+) Percent

Have Internet Access 80%

Source: U.S. Census Bureau, 2019-2023 ACS

2025 Profile of Older Floridians

Planning and Service Area (PSA) 3 Health Profile and Medical Resources

The health and medical section presents the variety and availability of different types of facilities, medical professionals, and treatment services in the community. This includes complex estimates based on probable usage by older adults. For example, the "Medically Underserved" are areas designated by the U.S. Department of Health and Human Services as having too few primary care providers, high infant mortality, high poverty, or a high elderly population. Medical access and health support services information is an important area for community planners to ensure that support is in place to accommodate an older population.

Ambulatory Surgical Centers	Value
Facilities	55
Operating Rooms	124
Recovery Beds	437

Source: Florida AHCA, 2025

Hospitals	Value
Hospitals	34
Hospitals with Skilled Nursing Units	1
Hospital Beds	5,775
Skilled Nursing Unit Beds	30

Source: Florida AHCA, 2025

Medical Professionals	Value
Medical Doctors	
Licensed	4,361
Limited License	8
Critical Need Area License	118
Restricted	0
Medical Faculty Certification	24
Public Health Certificate	0

Other Professionals	
Licensed Podiatric Physicians	102
Licensed Osteopathic Physicians	594
Dentists	863

Licensed Registered Nurses	32,180
Pharmacies	513

Source: Florida Department of Health, 2025

Assisted Living Facility	Value
Total ALF Beds	10,310
Optional State Supplementation (OSS) Beds	957
Non-OSS Beds	9,353
Total ALF Facilities	175
Facilities with Extended Congregate Care License	15
Facilities with Limited Mental Health License	22
Facilities with Limited Nursing Service License	41

Source: Florida AHCA, 2025

Medically Underserved	Value	Percent
Total Medically Underserved	1,257	0%
Living in Areas Defined as Having Medically Underserved Populations	1,257	0%

Living in Medically Underserved Areas	0	0%
---------------------------------------	---	----

Source: Calculated using U.S. Health Resources & Services Administration and U.S. Census Bureau

Health Insurance 65+	Value	Percent
Insured	508,187	99%
Uninsured	2,560	1%

Source: U.S. Census Bureau, 2019-2023 ACS

Disability Status (65+)	Value	Percent
With One Type of Disability	82,258	15%
With Two or More Disabilities	74,082	13%

Total With Any Disability	Value	Percent
Hearing	72,111	13%
Vision	26,712	5%
Cognitive	35,319	6%
Ambulatory	97,211	17%
Self-Care	27,177	5%
Independent Living	56,502	10%
With No Disabilities	346,877	62%

Probable Alzheimer's Cases, 2023 Projection (65+)

Source: U.S. Census Bureau, 2019-2023 ACS, 2023 One-Year Estimate

Medicaid & Medicare Beneficiaries	Value	Percent
60+ Medicaid Eligible	67,631	18%
60+ Dual Eligible	60,507	76%

Source: Florida AHCA, 2024

Adult Day Care (ADC)	Value
ADC Facilities	12
Capacity	494

Source: Florida AHCA, 2025

Home Health Agencies	Value
Agencies	183
Medicaid Certified Agencies	5
Medicare Certified Agencies	65
Homemaker and Companion Service Companies	228

Source: Florida AHCA, 2025

2025 Profile of Older Floridians

Planning and Service Area (PSA) 3 Health Profile and Medical Resources

Skilled Nursing Facility (SNF) Use	Value
SNFs With Beds	73
Community Beds	73
Sheltered Beds	3
Veterans Administration Beds	0
Other Beds	0
SNF Beds	8,770
Community Beds	8,770
Sheltered Beds	192
Veterans Administration Beds	0
Other Beds	0
SNFs With Community Beds	73
Community Bed Days	3,180,336
Community Patient Days	2,877,772
Medicaid Patient Days	1,750,796
Occupancy Rate	90%
Percent Medicaid	61%

The day the patient is admitted is a patient day. A bed day is a day during which a person is confined to a bed and in which the patient stays overnight in a hospital.

Source: Florida AHCA, 2025

Emergency Medical Services (EMS) Providers	Value
Providers	35

EMS providers include air ambulances and ambulances with Basic Life Support (BLS) or Advanced Life Support (ALS).
Source: Florida Department of Health, 2025

Adult Family Care Homes	Value
Homes	33
Beds	157

Source: Florida AHCA, 2025

Memory Disorder Clinics	Value
Total	1

Source: Florida DOEA's Department Overview, 2024

Dialysis	Value
End-Stage Renal Disease Centers	50

Source: Florida AHCA, 2024

Planning and Service Area (PSA) 3 Disaster Preparedness

The disaster preparedness section presents the count and percentage of people age 60 or older living in the legislative district that fall within particular storm surge evacuation zones, as well as the number of DOEA Home and Community-Based Services (HCBS) clients who reside in these zones. The estimate of electricity-dependent individuals is presented by insurance type to show the number of people who use electricity-dependent medical equipment necessary for things such as survival or mobility. This information can also be used to evaluate the sufficiency of shelters, generators, and evacuation route roadways to handle the needs of seniors and medically fragile adults in emergencies.

Electricity-Dependent	Value
Medicare Beneficiary	26,132
Medicaid Beneficiary	587

Medicare beneficiary includes the entire Medicare population (65+ and SSI Recipients).

Medicaid beneficiaries are individuals age 60 to 64.

Source: Florida AHCA, U.S. Centers for Medicare & Medicaid Services, 2024, and U.S. Department of Health

Shelter Resources	Value
Number of General Shelters	233
General Shelter Max Capacity in People	87,399
Number of Special Needs Shelters	33
Special Needs Shelters Max Capacity in People	4,019

Source: FDEM, 2024

Evacuation Zones	Value	Percent
DOEA HCBS Clients	3,409	100%
Zone A	54	2%
Zone B	52	2%
Zone C	31	1%
Zone D	52	2%
Zone E	81	2%
Lives in an Evac Zone and Has Memory Problems*	65	2%
Lives in an Evac Zone and Lives Alone*	124	4%

Zones are associated with the following surge heights: Zone A up to 11 feet, Zone B up to 15 feet, Zone C up to 20 feet, Zone D up to 28 feet, and Zone E up to 35 feet.

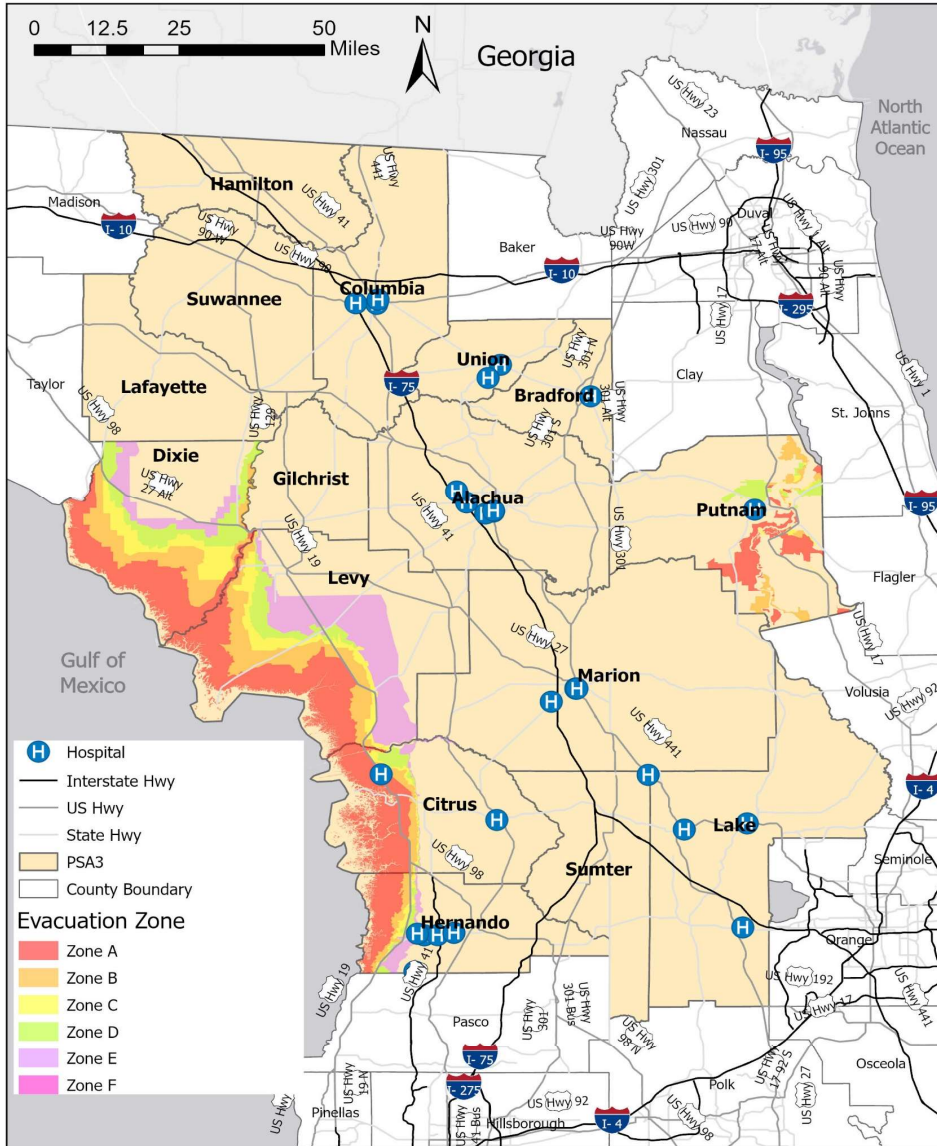
*Note: There are additional county-specific evacuation zones not listed on this table.

Source: Florida DOEA eCIRTS, 2025; ACS, Florida Division of Emergency Management (FDEM), 2024

2025 Profile of Older Floridians

Planning and Service Area (PSA) 3 Disaster Preparedness

Evacuation Zones



Zones are associated with the following surge heights: Zone A up to 11 feet, Zone B up to 15 feet, Zone C up to 20 feet, Zone D up to 28 feet, and Zone E up to 35 feet.
Source: FDEM, 2024