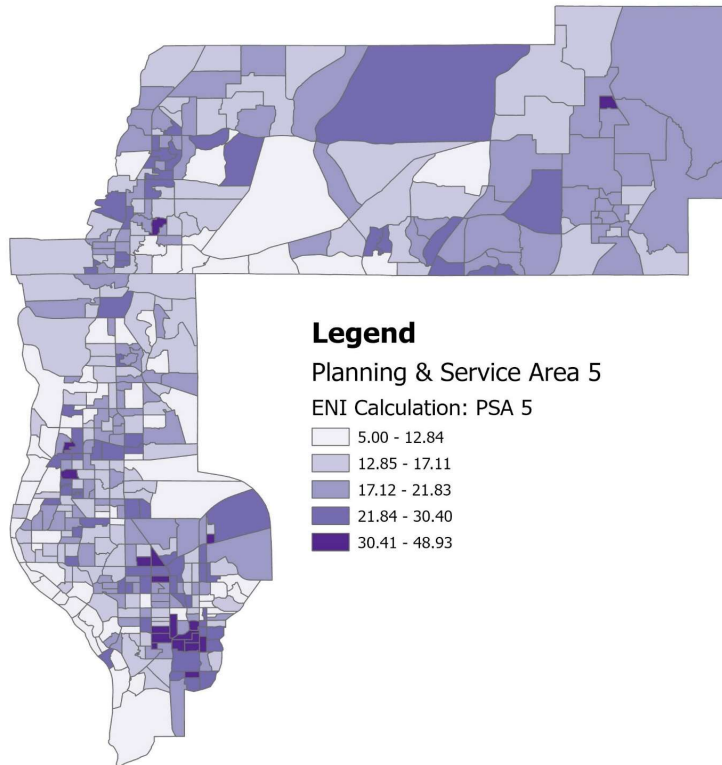


# 2025 Profile of Older Floridians

## Planning and Service Area (PSA) 5

This profile of older Floridians is a source of current information related to older adults in the Planning and Service Area. Topics include the current and future population of older adults, the prevalence of older adults who experience financial and housing issues, the array of health and medical resources, and information related to disasters. As Florida's older adult population grows, awareness of these issues is needed to ensure that older people continue to be vital participants in their communities.

## Elder Needs Index



The Elder Needs Index (ENI) is a measure that includes: (1) the percentage of the 60 and older population that is age 85 and older; (2) the percentage of the 55 and older population that are members of racial or ethnic minority groups; (3) the percentage of the 65 and older population with one or more disability; and (4) the percentage of the 55 and older population living below 125 percent of the Federal Poverty Level. ENI is an averaged score indicating older adults who may need social services within a geographic area. **It is not a percentage of the area's population.** The green areas of the map represent bodies of land such as national parks, state forests, wildlife management areas, and local and private preserves. The blue areas of the map represent bodies of water such as lakes, streams, rivers, and coastlines. Interactive maps, viewing software, and a detailed user's guide are available at [http://elderaffairs.state.fl.us/does/eni\\_home.php](http://elderaffairs.state.fl.us/does/eni_home.php)

Source: Florida Department of Elder Affairs using U.S. Census Bureau, 2018-2022 American Community Survey 5-Year Estimates

## Useful Websites

Bureau of Economic and Business Research (BEBR)  
U.S. Census Bureau, American Community Survey (ACS)  
U.S. Census Bureau, Quick Facts  
Florida Agency for Health Care Administration (AHCA)  
Florida Department of Elder Affairs (DOEA)  
How to Become an Age Friendly Community

Florida Division of Emergency Management (Shelters)  
Florida Housing Data Clearinghouse  
County Chronic Disease Profile  
Aging Integrated Database (AGID)  
Florida DOEA ENI Maps

# 2025 Profile of Older Floridians

## Planning and Service Area (PSA) 5 Demographic Profile

The demographics section presents the population characteristics of those age 60 and older and examines traits about older Floridians, such as the number of veterans, voters, and drivers.

Age Category	Value	Percent
All Ages	1,585,432	100%
Under 18	280,520	18%
Under 60	1,047,255	66%
18-59	766,735	48%
60+	538,177	34%
65+	414,561	26%
70+	295,699	19%
75+	193,421	12%
80+	110,535	7%
85+	55,975	4%

Source: BEBR, 2024

Gender	Value	Percent
Male	246,074	46%
Female	292,103	54%

Source: BEBR, 2024

Living Alone (65+)	Value	Percent
Male Living Alone	39,033	36%
Female Living Alone	69,695	64%

Source: U.S. Census Bureau, 2019-2023 ACS

Educational Attainment (65+)	Value	Percent
Less than High School	34,925	8%
High School Diploma	119,555	29%
Some College, No Degree	78,295	19%
Associates Degree or Higher	126,890	31%

Source: U.S. Census Bureau, 2019-2023 ACS

Marital Status	Male	Female
<b>Never Married</b>	17,055	13,880
Percentage Never Married	8%	5%
<b>Married</b>	141,605	119,235
Percentage Married	65%	46%
<b>Widowed</b>	21,520	70,890
Percentage Widowed	10%	28%
<b>Divorced</b>	36,585	52,905
Percentage Divorced	17%	21%

Source: AGID 2017-21 ACS

Race and Ethnicity	Value	Percent
White	492,457	92%
Black	31,529	6%
Other Race	14,191	3%
<b>Total Hispanic</b>	31,327	6%
White Hispanic	28,570	5%
Non-White Hispanic	2,757	1%
Total Non-Hispanic	506,850	94%
Total Minority	74,290	14%

The minority population includes black, other, and Hispanic.

Source: BEBR, 2024

Driver License Holders	Value	Percent
Drivers	472,610	36%

Source: Florida Department of Highway Safety and Motor Vehicles, 2024

Registered Voters	Value	Percent
Registered Voters	477,140	40%

Source: Florida Department of State, 2024

Percentage calculation is based on total registered voters.

Veterans	Value	Percent
Age 45-64	36,293	37%
Age 65-84	50,589	52%
Age 85+	10,115	10%

Source: U.S. Department of Veterans Affairs, 2023

Grandparents	Value	Percent
<b>Living With Grandchildren</b>	17,830	3%
Grandparent Responsible for Grandchildren	5,025	1%
Grandparent Not Responsible for Grandchildren	12,805	2%
<b>Not Living With Grandchildren</b>	445,460	83%

Grandchildren are defined as being under the age of 18.

Source: AGID 2017-21 ACS

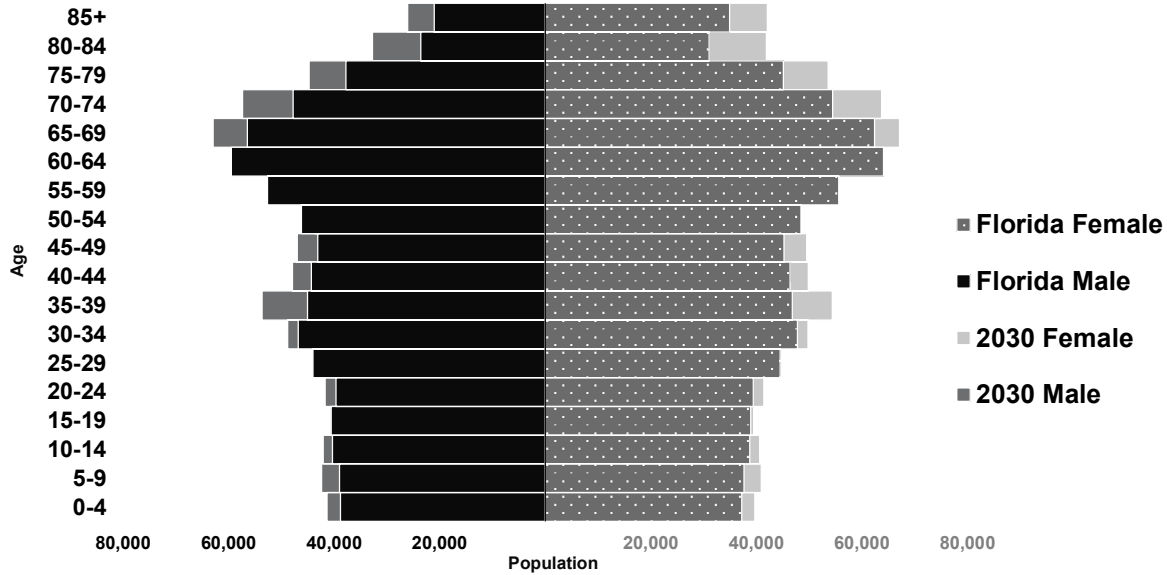
English Proficiency	Value	Percent
With Limited English Proficiency (65+)	12,368	3%

Source: U.S. Census Bureau, 2019-2023 ACS

# 2025 Profile of Older Floridians

## Planning and Service Area (PSA) 5 Demographic Profile

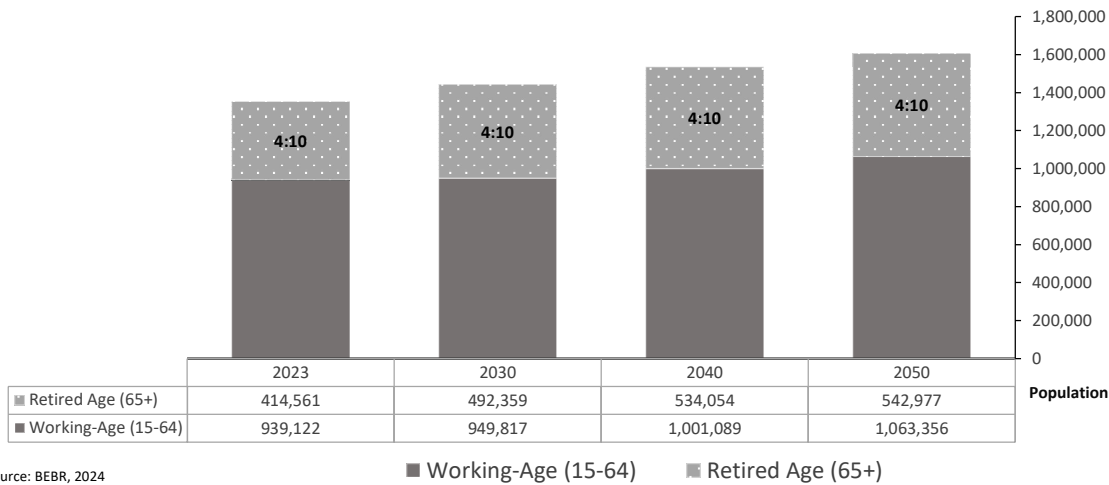
The population pyramid below compares the projected older adult population by gender between 2023 and 2030, demonstrating the changes expected in the next decade. As a whole, Florida is expected to experience population growth, with some areas expecting notable growth in the proportion of those age 65 and older.



Source: BEBR, 2024

## Older Adult Dependency Ratio

The dependency ratio contrasts the number of working-age (15-64) individuals compared to the number of individuals age 65 and older who are likely retired from the workforce. This ratio reflects the ongoing contributions of taxes and wages to support the health care and retirement systems used by retirees, as well as the availability of younger individuals to serve as caregivers to older loved ones.



Source: BEBR, 2024

# 2025 Profile of Older Floridians

## Planning and Service Area (PSA) 5 Financial Profile

This section examines financial conditions, poverty rates, and the cost of living for older Floridians. The ratio of income to poverty level graphic below shows the distribution of older adults relative to the poverty level to show the proportion of the senior population who fall below the Federal Poverty Level (FPL). The portrayal of the financial conditions of older adults is detailed in the final graphic, which includes information about income relative to rates of homeownership and partnership status in the consideration of cost of living.

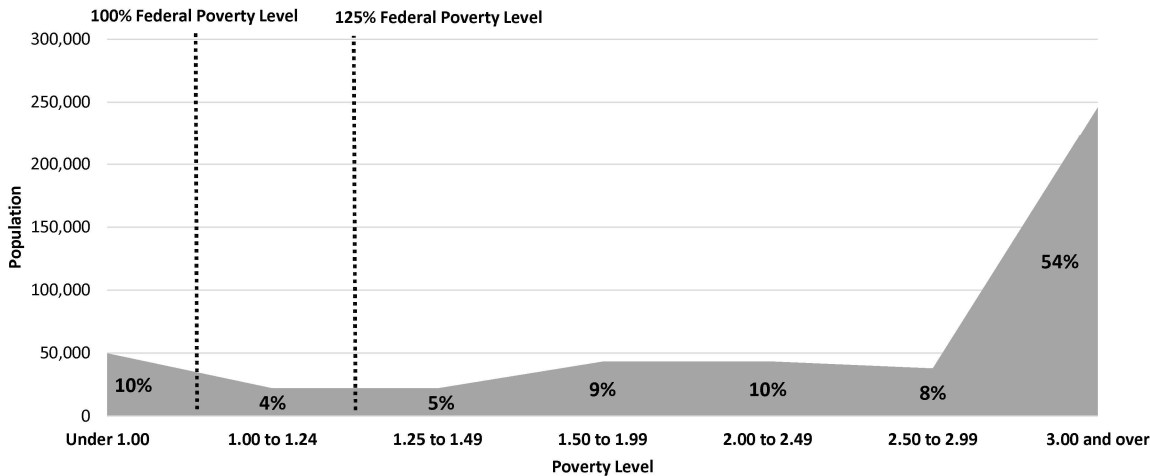
Federal Poverty Level	Value
Single-Person Household	\$15,650
Two-Person Household	\$21,150
125% Single-Person Household	\$19,563
125% Two-Person Household	\$26,438

Source: U.S. Department of Health & Human Services, 2025

Poverty (65+)	Value	Percent
At Poverty Level	41,827	10%
Below 125% of Poverty Level	57,987	14%
Minority At Poverty Level	5,301	1%
Minority Below 125% of Poverty Level	7,350	2%

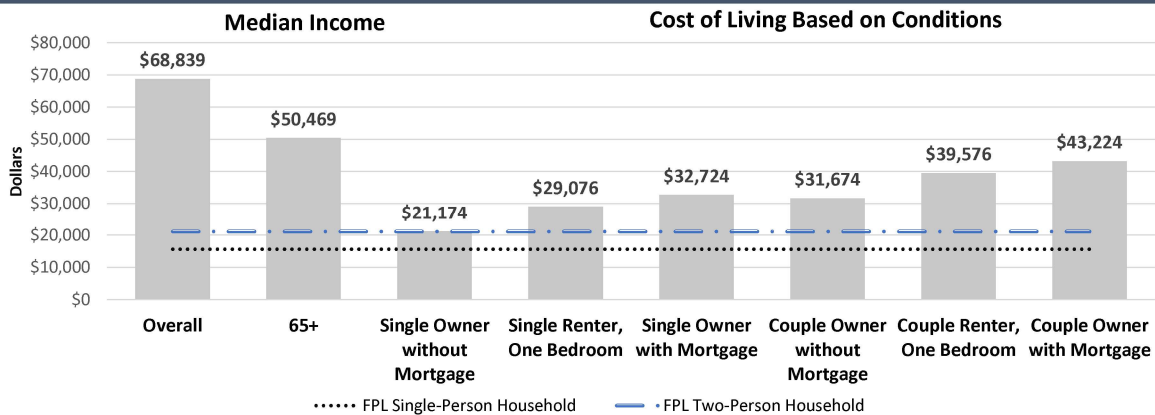
Source: U.S. Census Bureau, 2019-2023 ACS

## Ratio of Income to Poverty Level



Value is expressed as the percentage of the 60+ population, with the dotted lines representing the Federal Poverty Level.  
Source: AGID 2017-21 ACS

## Financial Conditions



Cost of living is an index of how much income retired older adults require to meet their basic needs to live in their community without assistance.  
Source: U.S. Census Bureau, 2019-2023 ACS and Elder Index, (2024). The Elder Index™ [Public Dataset]. Boston, MA: Gerontology Institute, University of Massachusetts Boston. Retrieved from E

# 2025 Profile of Older Floridians

## Planning and Service Area (PSA) 5 Livability Profile

The livability section presents new elements, such as available affordable housing for older adults. Many essential community elements are also included below, such as sidewalk safety, the safety of roadways, and availability of green spaces. The rates of older Floridians who have access to a vehicle or public transportation, as well as the availability of internet access and various food resources, are also provided. These provide estimates of older adults' ability to access community resources.

### Pedestrian Safety Percent

Sidewalks with Barriers 26%

Physical barriers are those that separate motorized vehicle lanes from sidewalks or shared path (e.g. areas for parking lots, guardrail, trees, etc.).

Source: Florida Department of Transportation, 2025

### Road Incidents Value

Total Involved in Fatal Car Crashes per 100,000 14

This figure includes occupants and non-occupants involved in a crash.

Source: Florida Department of Highway Safety and Motor Vehicles, 2024

### Age Friendly Designation Value

Age Friendly 1

Number of Counties 2

The following counties have received the designation: Pinellas

Source: Florida DOEA Livable Communities, 2021

### Food Resource Centers Value

SNAP Access Sites 1

Fresh Access Bucks Outlet 9

Farmer's Market 10

Food Distribution (No Cost) 43

SNAP Retailers 1,110

Congregate Meal Sites 15

Food Distribution (No Cost) is the number of food pantries, soup kitchens, and food banks in the area.

Source: Feeding Florida, USDA, Food-Banks, DCF, FDACS, 2025;

### Public Transportation Options Value

Bus Operations at least at the County 2

Rail Operations at least at the County 0

Public Transit Service Area (sq. mi.) 1,571

Public Transit Service Area Population 2,380,668

Annual Unlinked Trips 6,166,456

Vehicles Operated in Maximum Service (VOMS) 736

Total Miles of Bike Lanes 787

Information on service area is not reported by rural and intercity public transit.

VOMS are the number of vehicles operated to meet the annual max service, and unlinked trips are the number of passengers boarding public transit.

Source: Federal Transit Administration, 2023, and FDOT, 2023-2024

### Green Space Value

Number of Nearby State Parks 7

Nearby refers to the park that has the shortest distance from the center of the county.

Source: Florida Department of Environmental Protection, 2025

### Rural-Urban Designation Value

Census Tracts Rural 1%

Census Tracts Urban 100%

Number of Census Tracts 379

Source: U.S. Department of Agriculture, 2019

### Households With High Cost Burden (65+) Value

Owner-Occupied Households 62,021

Percent of Owners with High Cost Burden 23%

Renter-Occupied Households 55,057

Percent of Renters with High Cost Burden 25%

Households with a high cost burden have occupants age 65+ paying more than 30% of income for housing costs and having an income below 50% of the area median income.

Source: The Shimberg Center for Housing Studies, 2023, U.S. Census Bureau, 2019-2023 ACS

### Affordable Housing Inventory Value

Properties 66

Properties Ready for Occupancy 66

Total Units 7,403

Units with Rent and/or Income Restrictions 6,926

Units Receiving Monthly Rental Assistance 2,456

Affordable housing inventory receives funding from HUD, Florida Housing Financing Corp., and the USDA. The inventory above includes older adults as its target population.

Source: The Shimberg Center for Housing Studies, 2022-2023

### Housing Units by Occupancy (65+) Percent

Owner-Occupied Housing Units 53%

Renter-Occupied Housing Units 30%

Source: U.S. Census Bureau, 2019-2023 ACS

### Vehicle Access (65+) Percent

Owner-Occupied Households with Access to Vehicle(s) 95%

Renter-Occupied Households with Access to Vehicle(s) 73%

Source: U.S. Census Bureau, 2019-2023 ACS

### Employment Status (65+) Value Percent

Number of Seniors Employed 200,741 48%

Number of Seniors Unemployed 7,589 2%

Source: U.S. Census Bureau, 2019-2023 ACS

### Retirement (65+) Value Percent

Social Security Beneficiaries 336,945 81%

SSI Recipients 9,316 30%

SSI stands for Supplemental Security Income. To qualify, a person must be at least age 65 OR be blind or disabled. Also, the person must have limited income and resources.

Source: U.S. Social Security Administration, 2023

### SNAP or Food Stamps Value

Potentially Eligible 57,987

Annual Participants 50,880

Current Beneficiaries as of Dec-24 39,455

Percent of Total Population Receiving Benefits 7%

Potentially Eligible are individuals below 125% of the Federal Poverty Level

Source: Florida Department of Children and Families, 2024

### Internet Access (65+) Percent

Have Internet Access 85%

Source: U.S. Census Bureau, 2019-2023 ACS

# 2025 Profile of Older Floridians

## Planning and Service Area (PSA) 5 Health Profile and Medical Resources

The health and medical section presents the variety and availability of different types of facilities, medical professionals, and treatment services in the community. This includes complex estimates based on probable usage by older adults. For example, the "Medically Underserved" are areas designated by the U.S. Department of Health and Human Services as having too few primary care providers, high infant mortality, high poverty, or a high elderly population. Medical access and health support services information is an important area for community planners to ensure that support is in place to accommodate an older population.

Ambulatory Surgical Centers	Value
Facilities	52
Operating Rooms	129
Recovery Beds	429

Source: Florida AHCA, 2025

Hospitals	Value
<b>Hospitals</b>	27
Hospitals with Skilled Nursing Units	0
<b>Hospital Beds</b>	5,699
Skilled Nursing Unit Beds	0

Source: Florida AHCA, 2025

Medical Professionals	Value
<b>Medical Doctors</b>	
Licensed	4,264
Limited License	5
Critical Need Area License	37
Restricted	0
Medical Faculty Certification	0
Public Health Certificate	0

<b>Other Professionals</b>	
Licensed Podiatric Physicians	117
Licensed Osteopathic Physicians	1,004
Dentists	1,053
<b>Licensed Registered Nurses</b>	29,155
<b>Pharmacies</b>	443

Source: Florida Department of Health, 2025

Assisted Living Facility	Value
<b>Total ALF Beds</b>	12,176
Optional State Supplementation (OSS) Beds	1,211
Non-OSS Beds	10,965
<b>Total ALF Facilities</b>	187
Facilities with Extended Congregate Care License	14
Facilities with Limited Mental Health License	25
Facilities with Limited Nursing Service License	28

Source: Florida AHCA, 2025

Medically Underserved	Value	Percent
<b>Total Medically Underserved</b>	4,799	1%
Living in Areas Defined as Having Medically Underserved Populations	2,640	0%
Living in Medically Underserved Areas	2,159	0%

Source: Calculated using U.S. Health Resources & Services Administration and U.S. Census Bureau

Health Insurance 65+	Value	Percent
Insured	364,333	99%
Uninsured	2,789	1%

Source: U.S. Census Bureau, 2019-2023 ACS

Disability Status (65+)	Value	Percent
With One Type of Disability	59,168	14%
With Two or More Disabilities	63,958	15%

Total With Any Disability	Value	Percent
Hearing	48,948	12%
Vision	22,613	5%
Cognitive	27,968	7%
Ambulatory	74,417	18%
Self-Care	23,724	6%
Independent Living	44,618	11%
With No Disabilities	264,123	64%

Probable Alzheimer's Cases, 2023 Projection (65+)

Source: U.S. Census Bureau, 2019-2023 ACS, 2023 One-Year Estimate

Medicaid & Medicare Beneficiaries	Value	Percent
60+ Medicaid Eligible	54,548	22%
60+ Dual Eligible	48,958	79%

Source: Florida AHCA, 2024

Adult Day Care (ADC)	Value
ADC Facilities	15
Capacity	775

Source: Florida AHCA, 2025

Home Health Agencies	Value
<b>Agencies</b>	168
Medicaid Certified Agencies	2
Medicare Certified Agencies	39
Homemaker and Companion Service Companies	142

Source: Florida AHCA, 2025

# 2025 Profile of Older Floridians

## Planning and Service Area (PSA) 5 Health Profile and Medical Resources

Skilled Nursing Facility (SNF) Use	Value
<b>SNFs With Beds</b>	85
Community Beds	84
Sheltered Beds	3
Veterans Administration Beds	1
Other Beds	1
<b>SNF Beds</b>	9,863
Community Beds	9,778
Sheltered Beds	265
Veterans Administration Beds	120
Other Beds	244
<b>SNFs With Community Beds</b>	84
Community Bed Days	3,541,444
Community Patient Days	2,981,283
Medicaid Patient Days	1,941,107
Occupancy Rate	84%
Percent Medicaid	65%

The day the patient is admitted is a patient day. A bed day is a day during which a person is confined to a bed and in which the patient stays overnight in a hospital.

Source: Florida AHCA, 2025

Emergency Medical Services (EMS) Providers	Value
Providers	28

EMS providers include air ambulances and ambulances with Basic Life Support (BLS) or Advanced Life Support (ALS).  
Source: Florida Department of Health, 2025

Adult Family Care Homes	Value
Homes	12
Beds	59

Source: Florida AHCA, 2025

Memory Disorder Clinics	Value
Total	1

Source: Florida DOEA's Department Overview, 2024

Dialysis	Value
End-Stage Renal Disease Centers	31

Source: Florida AHCA, 2024

## Planning and Service Area (PSA) 5 Disaster Preparedness

The disaster preparedness section presents the count and percentage of people age 60 or older living in the legislative district that fall within particular storm surge evacuation zones, as well as the number of DOEA Home and Community-Based Services (HCBS) clients who reside in these zones. The estimate of electricity-dependent individuals is presented by insurance type to show the number of people who use electricity-dependent medical equipment necessary for things such as survival or mobility. This information can also be used to evaluate the sufficiency of shelters, generators, and evacuation route roadways to handle the needs of seniors and medically fragile adults in emergencies.

Electricity-Dependent	Value
Medicare Beneficiary	15,945
Medicaid Beneficiary	525

Medicare beneficiary includes the entire Medicare population (65+ and SSI Recipients).

Medicaid beneficiaries are individuals age 60 to 64.

Source: Florida AHCA, U.S. Centers for Medicare & Medicaid Services, 2024, and U.S. Department of Health

Shelter Resources	Value
<b>Number of General Shelters</b>	134
General Shelter Max Capacity in People	53,021
<b>Number of Special Needs Shelters</b>	14
Special Needs Shelters Max Capacity in People	2,581

Source: FDEM, 2024

Evacuation Zones	Value	Percent
<b>DOEA HCBS Clients</b>	8,966	100%
Zone A	1,101	12%
Zone B	721	8%
Zone C	939	10%
Zone D	1,042	12%
Zone E	403	4%
Lives in an Evac Zone and Has Memory Problems*	536	6%
Lives in an Evac Zone and Lives Alone*	1,327	15%

Zones are associated with the following surge heights: Zone A up to 11 feet, Zone B up to 15 feet, Zone C up to 20 feet, Zone D up to 28 feet, and Zone E up to 35 feet.

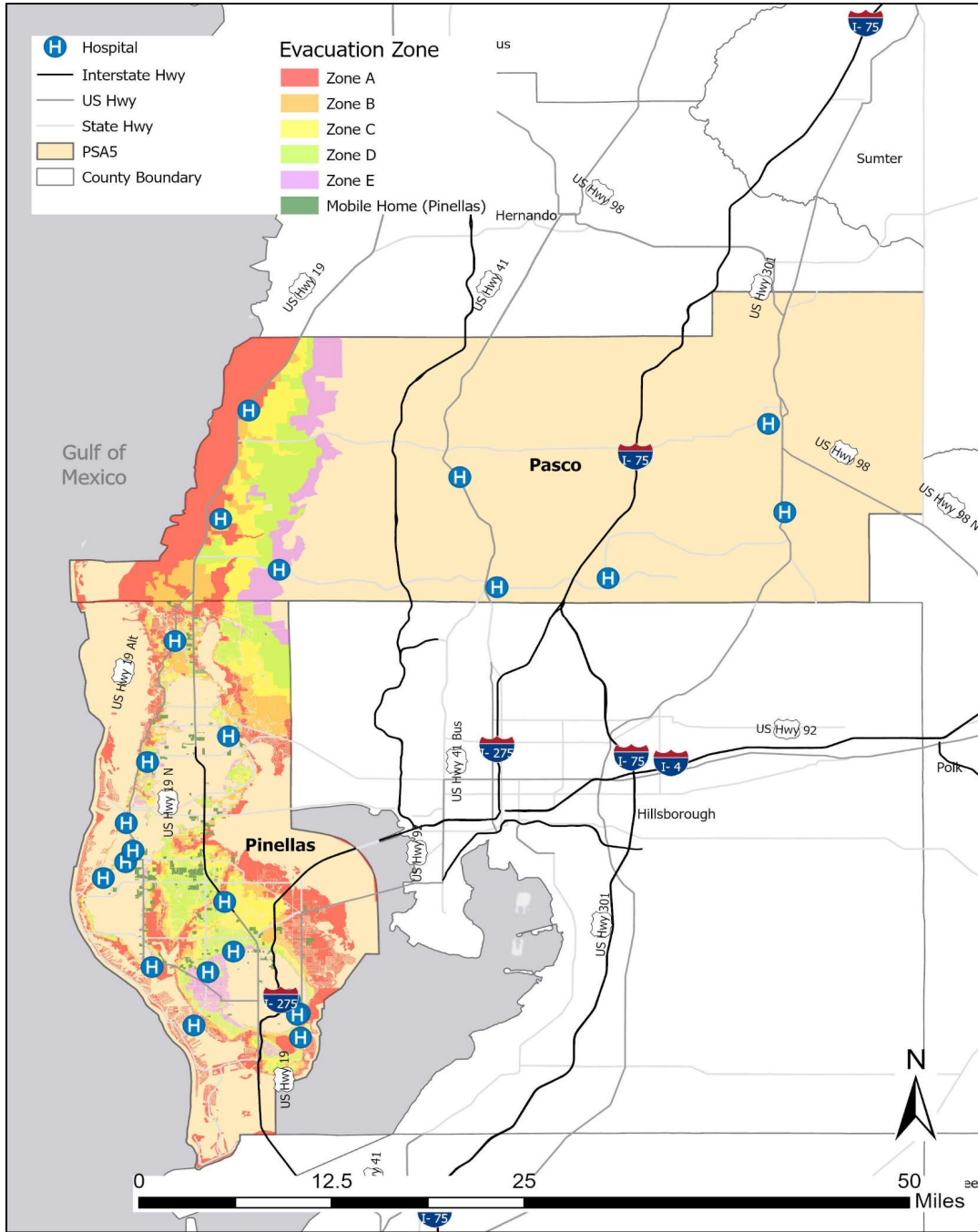
\*Note: There are additional county-specific evacuation zones not listed on this table.

Source: Florida DOEA eCIRTS, 2025; ACS, Florida Division of Emergency Management (FDEM), 2024

# 2025 Profile of Older Floridians

## Planning and Service Area (PSA) 5 Disaster Preparedness

### Evacuation Zones



Zones are associated with the following surge heights: Zone A up to 11 feet, Zone B up to 15 feet, Zone C up to 20 feet, Zone D up to 28 feet, and Zone E up to 35 feet.  
Source: FDEM, 2024